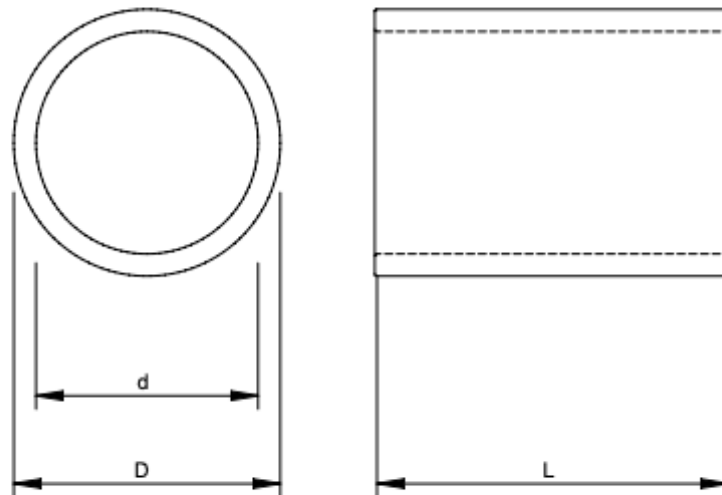


EMC Circular Frame

Sleeve without flange for Hawke Round transits.

CHARACTERISTICS

- ◆ Designed to be welded.
- ◆ Materials: Mild Steel, Stainless Steel and Aluminium
- ◆ To be sealed with standard or EMC HRT/HRTO and HRST.



Stainless Steel

DESCRIPTION	d (mm)	D (mm)	L (mm)	Weight (kg)
SS C -30 L=80	33	42	80	0,3
SS C -40 L=80	40	50	80	0,4
SS C -50 L=80	50	60,3	80	0,6
SS C -70 L=80	70	88,9	80	1,5
SS C -100 L=80	100	114,3	80	1,5
SS C -125 L=80	125	141,3	80	2,2
SS C -150 L=80	150	168,3	80	2,9
SS C -175 L=80	175	-	80	-
SS C -200 L=80	200	220	80	4,2

*All dimensions are nominal values